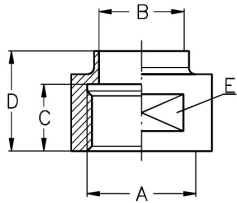
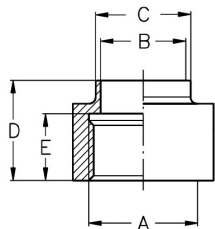
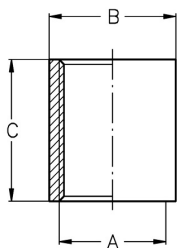


Threaded fittings DIN EN 10241
Art.No
EUR
Art.No
EUR
Welding socket with spanner flat


DN	A	B	C	D	E			AISI316L	
10	G 3/8"	10	12	20	SW 19			540230	Enquiry
15	G 1/2"	16	15	25	SW 24			540231	Enquiry
20	G 3/4"	20	15	25	SW 30			540232	Enquiry
25	G 1"	26	20	30	SW 41			540233	Enquiry
32	G 1,25"	32	20	30	SW 46			540234	Enquiry
40	G 1,5"	38	20	30	SW 55			540235	Enquiry
50	G 2"	50	20	32	SW 65			540236	Enquiry
65	G 2,5"	66	22	32	SW 80			540237	Enquiry
80	G 3"	81	25	37	SW 95			540238	Enquiry
100	G 4"	100	30	45	SW 120			540239	Enquiry

Welding socket without spanner flat


DN	A	B	C	D	E	AISI304		AISI316L	
10	G 3/8"	10	15	20	12	544930	Enquiry	545030	Enquiry
15	G 1/2"	16	21	25	15	544931	Enquiry	545031	Enquiry
20	G 3/4"	20	25	25	15	544932	Enquiry	545032	Enquiry
25	G 1"	26	31	30	20	544933	Enquiry	545033	Enquiry
32	G 1,25"	32	37	30	20	544934	Enquiry	545034	Enquiry
40	G 1,5"	38	43	30	20	544935	Enquiry	545035	Enquiry
50	G 2"	50	55	32	20	544936	Enquiry	545036	Enquiry
65	G 2,5"	66	72	32	22	544937	Enquiry	545037	Enquiry
80	G 3"	81	87	37	25	544938	Enquiry	545038	Enquiry
100	G 4"	100	016	45	30	544939	Enquiry	545039	Enquiry

Socket, Rp


DN	A	B	C			AISI316Ti	
6	Rp 1/8"	14	17			540428	6,10
8	Rp 1/4"	17,5	25			540429	5,40
10	Rp 3/8"	21,3	26			540430	6,60
15	Rp 1/2"	26,4	34			540431	8,70
20	Rp 3/4"	31,8	36			540432	10,40
25	Rp 1"	39,5	43			540433	15,50
32	Rp 1,25"	48,3	48			540434	19,40
40	Rp 1,5"	54,5	48			540435	24,80
50	Rp 2"	66,3	56			540436	33,50
65	Rp 2,5"	82	65			540437	75,40
80	Rp 3"	95	71			540438	102,40
100	Rp 4"	122	83			540439	153,10
125	Rp 5"	150	92			540441	Enquiry
150	Rp 6"	180	92			540442	Enquiry

Similar to DIN EN 10241